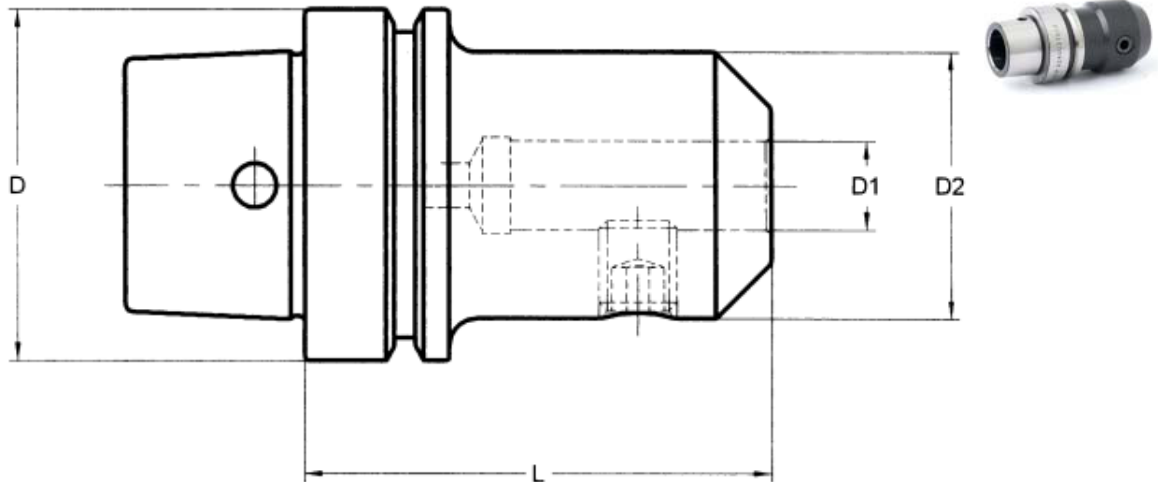


For end mills with shank DIN 1835-B - DIN 1835 HB

Rev. 12-1101 Page 1 of 2  
Uncontrolled Document



- Maximum circular deviation between outer taper and D1  $\leq 0.003$  mm.
- The hole diameter and circular deviation tolerances have been significantly tightened up compared with DIN 1835 in order to achieve the highest levels of machining precision.
- Coolant tube to be ordered separately.
- Balanced according to ISO 1940-1 up to 10,000 rpm.
- We have latest methods for dynamic balancing up to 50,000 rpm.
- D1  $\geq 25$  mm: tow clamping holes.

Taper (D)	Length (L)	D1	Part Number
HSK-E 25	50	6	<a href="#">681.01218011006</a>
HSK-E 25	50	8	<a href="#">681.01218011008</a>
HSK-E 32	60	6	<a href="#">681.01218011106</a>
HSK-E 32	60	8	<a href="#">681.01218011108</a>
HSK-E 32	65	10	<a href="#">681.01218011110</a>
HSK-E 40	60	6	<a href="#">681.01218011206</a>
HSK-E 40	60	8	<a href="#">681.01218011208</a>
HSK-E 40	60	10	<a href="#">681.01218011210</a>
HSK-E 40	70	12	<a href="#">681.01218011212</a>
HSK-E 40	75	14	<a href="#">681.01218011214</a>
HSK-E 40	75	16	<a href="#">681.01218011216</a>
HSK-E 50	65	6	<a href="#">681.01218011306</a>
HSK-E 50	65	8	<a href="#">681.01218011308</a>
HSK-E 50	80	10	<a href="#">681.01218011310</a>
HSK-E 50	80	12	<a href="#">681.01218011312</a>
HSK-E 50	80	14	<a href="#">681.01218011314</a>
HSK-E 50	80	16	<a href="#">681.01218011316</a>
HSK-E 50	80	18	<a href="#">681.01218011318</a>
HSK-E 50	80	20	<a href="#">681.01218011320</a>

For end mills with shank DIN 1835-B - DIN 1835 HB

Rev. 12-1101 Page 2 of 2  
Uncontrolled Document



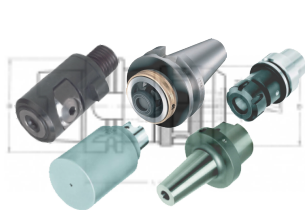
Taper (D)	Length (L)	D1	Part Number
HSK-E 63	65	6	681.01218011406
HSK-E 63	65	8	681.01218011408
HSK-E 63	65	10	681.01218011410
HSK-E 63	80	12	681.01218011412
HSK-E 63	80	14	681.01218011414
HSK-E 63	80	16	681.01218011416
HSK-E 63	80	18	681.01218011418
HSK-E 63	80	20	681.01218011420
HSK-E 63	110	25	681.01218011425

Available to HSK-E 25, 32, 40, 50, 63

## TAC Rockford Product Line

Machine Tool Gauges, Tool Changer Alignment, Runout Test Arbors, Workholding Systems, Tool Holders, Adapters and Extensions, Tool Holder Blanks, Machine Tool Accessories, Coolant Tubes and Gauges, Heat Shrink Systems, Rapid Prototyping

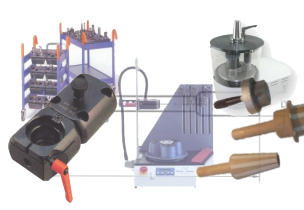
### Tool Holders



### Gauges



### Accessories



### Rapid Prototyping

