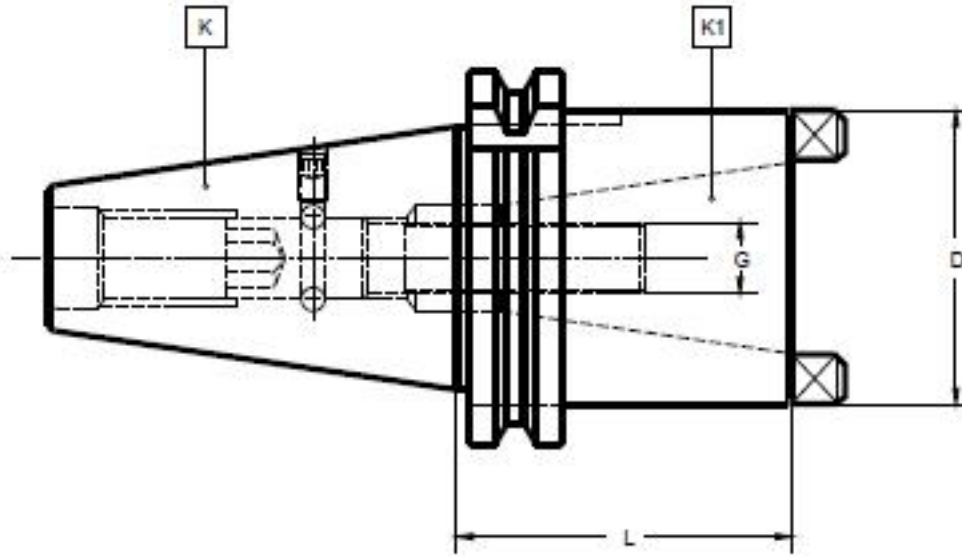


With double effect pullstud – For tools with DIN 2080 taper

Rev. 12-1101 Page 1 of 1
Uncontrolled Document



· Maximum circular deviation between K and K1 ≤ 0.008

DIN 69871 Taper (K)	DIN 2080 Taper (K1)	D	G	Length (L)	Part Number
Steep Taper 40	Steep Taper (DIN 2080) 30	50	M-12	58	681.0031332020101
Steep Taper 40	Steep Taper (DIN 2080) 40	68	M-16	85	681.0031332020201
Steep Taper 50	Steep Taper (DIN 2080) 30	55	M-12	53	681.0031332040101
Steep Taper 50	Steep Taper (DIN 2080) 40	70	M-16	63	681.0031332040201

Clamping cartridge not included – available on request.

TAC Rockford Product Line

Machine Tool Gauges, Tool Changer Alignment, Runout Test Arbors, Workholding Systems, Tool Holders, Adapters and Extensions, Tool Holder Blanks, Machine Tool Accessories, Coolant Tubes and Gauges, Heat Shrink Systems, Rapid Prototyping

Tool Holders



Gauges



Accessories



Rapid Prototyping

