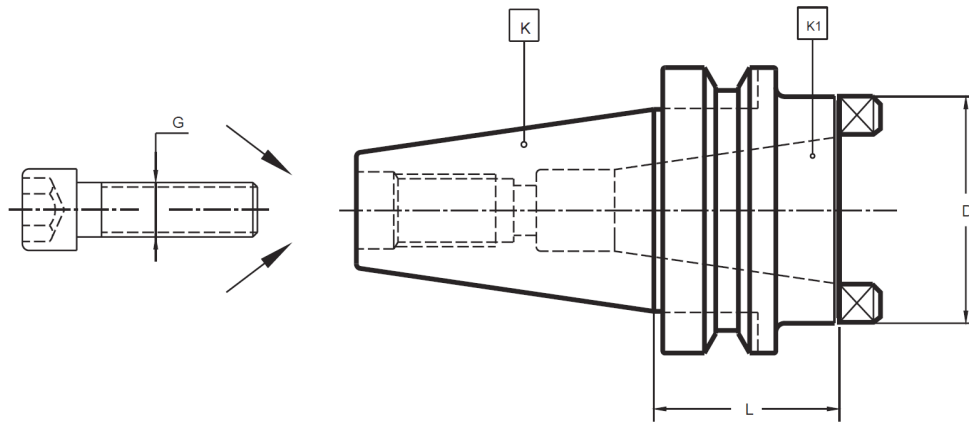


# Laip Steep Taper (MAS 403 BT) to Steep Taper (ISO) Reducing Adapters 681.003.1231

For tools with DIN 2080, DIN 69871 or MAS 403 BT tapers

Rev. 12-1101 Page 1 of 1  
Uncontrolled Document



- Maximum circular deviation between K and K1  $\leq 0.008$
- Pull stud necessary to use Steep Taper (DIN 2080) shanks
- Pull stud necessary to use Steep Taper DIN 69871 and MAS 403 BT shanks
- Pull studs supplied on request

MAS 403 BT Taper (K)	Steep Taper (K1)	D	G	Length (L)	Part Number
Steep Taper (BT) 50	Steep Taper 40	70	M-16	51	<b>681.00312310402</b>

Clamping cartridge not included – available on request.

## TAC Rockford Product Line

Machine Tool Gauges, Tool Changer Alignment, Runout Test Arbors, Workholding Systems, Tool Holders, Adapters and Extensions, Tool Holder Blanks, Machine Tool Accessories, Coolant Tubes and Gauges, Heat Shrink Systems, Rapid Prototyping

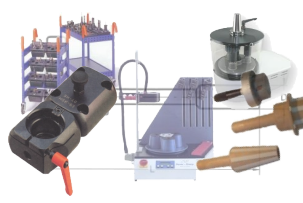
### Tool Holders



### Gauges



### Accessories



### Rapid Prototyping

