

Tool Carriers Made of Plastic - Basic Element of the TUL System.



The tool carrier measures 240 x 120 x 130 mm and has 2, 3 or 5 locations for holding tools with a tapered or cylindrical shank. The plastic used is shock-proof and resistant to all substances which are usually present such as oils, fats, petrol.

Tool carriers with colour marking

Coloured pins for clear indication of the tool's status. Colour coding shows at a glance the new tools for the machine and used tools for resetting.

Colour pins	Colour	Ref.no.
1 packet incl. 50 pieces	Red	127.047
	Green	127.048



TUL carrier with holding disk for cutting tools

For the transport and storage of cutting tools. The disk is rotatable and indicates whether the cutting tool can be used or whether it is worn out.
Ref.no. on request.

Versatile:



The tool carrier is used **individually** to store and transport few tools. A hole with countersinking enables it to be fastened to a base.



By assembling several tool carriers **linked** together, a higher storage capacity can be achieved. A groove and tongue prevent lateral displacement. Only the first and the last tool carrier has to be fixed to the table or tool cabinet.



The tool carriers can be **inserted** on all trolleys and racks with bars at the side for carrying tools vertically.



The tool carriers can be **suspended** onto aluminium profile rails for attachment on walls, racks, tall cabinets and transport trolleys. Aluminium profile rails and tool carriers are ideal for building customized storage and transport units.

Use for	Size	Number of locations	Ref. no.	Weight kg
HSK tapers HSK A - ISO 12164-1 **	HSK 32	5	127.025	0.9
	HSK 40	5	127.026	0.9
	HSK 50	3	127.027	0.7
	HSK 63	3	127.028	0.7
	HSK 80	2	127.029	0.8
	HSK 100	2	127.030	0.8
	HSK 125	1	on request	1.4
	HSK 160	1	on request	1.4
ISO tapers DIN 2080 / ISO 297 DIN 69 871 JIS B 6339 (MAS 403 BT) ANSI B 5.50	ISO 30	3	127.091	0.8
	ISO 35	3	127.018	1.1
	ISO 40	3	127.011	0.8
	ISO 45	2	127.015	0.8
	ISO 50	2	127.001	0.8
	ISO 60 240x240x130 mm	1	127.073*	1.4
Morse tapers DIN 228	Morse 3	5	127.009	1.0
	Morse 4	5	127.007	0.9
	Morse 5	3	127.014	0.9
Cylindrical shanks (Adjustable adapters) DIN 6327	Tr 16 (ø 17.3)	5	127.010	1.0
	Tr 20 (ø 21.4)	5	127.009	1.0
	Tr 25 (ø 27.2)	5	127.008	0.9
	Tr 28 (ø 30.3)	5	127.007	0.9
	Tr. 36 (ø 38.6)	3	127.012	1.1
	Tr 40 (ø 41.3)	3	127.014	0.9
	Tr 48 (ø52.0)	3	127.002	0.8
Cylindrical shanks (Lathes)	16, ø 30	5	127.007	0.9
	20, ø 40	3	127.014	0.9
	25, ø 50	3	127.002	0.9
	32, ø 60	2	127.099	0.8
ABS-Komet ABS-N	ABS 40 (ø 20)	3	127.069	0.7
	ABS 50 (ø 28)	3	127.070	0.7
	ABS 63 (ø 34)	3	127.071	0.7
Capto™ - System	C 3	5	127.009	1.0
	C 4	5	127.008	0.9
	C 5	3	127.057	0.9
	C 6	3	127.058	1.0
	C 8	2	127.059	1.0
KM / UTS - System	KM 32	5	127.060	0.9
	KM 40	5	127.061	0.9
	KM 50	3	127.062	0.9
	KM 63	3	127.063	0.8
	KM 80	2	127.064	1.0
Modular precision spindle inserts	240x240x130 mm	2	127.100*	
Universal carrier to be used as tray or with the board supplied for small tools (drilling stencil included)	240x240x130 mm	0	127.016*	2.2

**Spares for HSK

Size	Retainer Ref.no.
HSK 32	127.122
HSK 40	127.123
HSK 50	127.124
HSK 63	127.125
HSK 80	127.126
HSK 100	127.127

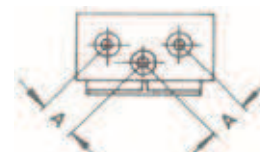
* Important

information:

When held up on aluminium profile rails the application possibilities are limited due to the double size. Please request additional information if required.



Number of locations	A
2	120
3	70
5	51



TULMOBIL System 1 (RAL 2004)

Model OS1

(former model FM)



Tyres: Without tread, grey solid rubber

Capacity

To accommodate 8 tool carriers at an angle on aluminium profile rails. In the top and bottom steel frame a further 8 carriers or small storage boards or trays can be inserted.

Standard specification

With 2 swivel castors (one with locking device), 2 fixed castors, push handle and 4 aluminium profile rails.

l x w x h = 770 x 500 x 960 mm
Loading capacity 300 kp
Weight 37.0 kg

Ref.no. 129.011



Model OS2

(former model TF)



Tyres: Without tread, grey solid rubber

Capacity

To accommodate 16 tool carriers at an angle on aluminium profile rails. Two further carriers can be inserted in the front steel frame and another seven in the back. The top profile frame available as an accessory provides additional deposit space.

Standard specification

With 2 swivel castors (one with locking device), 2 fixed castors, push handle and 4 aluminium profile rails.

l x w x h = 975 x 700 x 1015 mm
Loading capacity 600 kp
Weight 60.0 kg

Ref.no. 129.020



Model OS3

(former model BZ)



Tyres: Without tread, grey solid rubber

Capacity

To accommodate 32 tool carriers at an angle on aluminium profile rails. The profile frame available as an accessory provides additional deposit space.

Standard specification

With 2 swivel castors (one with locking device), 2 fixed castors, push handle and 8 aluminium profile rails.

l x w x h = 975 x 900 x 1015 mm
Loading capacity 600 kp
Weight 70.0 kg

Ref.no. 129.021



TULMOBIL - Accessories and Spare Parts

Drawing bag made of sheet metal



Standard specification:

To be attached on the front side,
for DIN A4 horizontal format.
Weight: 2.1 kg

For TULMOBIL OS1 and OH3

Ref.no. 130.014

Profile frame



Standard specification:

To be screwed on, suitable for
8 tool carriers or a deposit board
or a combination of tool carriers,
deposit trays and deposit boards.
Weight: 3.9 kg

For TULMOBIL OS2 and OS3

Ref.no. 130.020

Protective frame



Standard specification:

Can be folded up (can be retrofitted).
Weight: 11.0 kg

For TULMOBIL OS3

Ref.no. 130.023

Swivel castors with locking device



Standard specification:

Tyres: Without thread, grey solid rubber
Rims: Made of pressed sheet steel,
with roller bearing, zink-plated.

For TULMOBIL OS1

Ref.no. 130.001

Design: As described above, without stem
For TULMOBIL OS2 / OS3 (ø 160 mm)

Ref.no. 130.003

Simple swivel castors



Standard specification:

Tyres: Without thread, grey solid rubber
Rims: Made of pressed sheet steel,
with roller bearing, zink-plated.

For TULMOBIL OS1

Ref.no. 130.002

Design: As described above, without stem
For TULMOBIL OS2 / OS3 (ø 160 mm)

Ref.no. 130.004

Fixed castors with plate fitting



Standard specification:

Tyres: Without thread, grey solid rubber
Rims: Made of pressed sheet steel
with steel tube hub, with roller or ball bearing,
zink-plated.

For TULMOBIL OS1 (ø 140 mm)

Ref.no. 130.007

For TULMOBIL OS2 / OS3 (ø 160 mm)

Ref.no. 130.005

VariTUL - The New Mobility in the Production Area

KELCH



- Robust construction
- Variable assembly options
- Versatile application
- Functional and manoeuvrable
- Low investment costs
- Aesthetically pleasing

Customisable Transportation Solutions

The basic trolley framework consists of two side elements, two insert frames and a push handle that are quickly interlocked to form a robust structure. The practical design allows the trolley to be arranged to suit your specific transportation task. With *VariTUL* you can now create your own trolley. There are several possibilities for combining the individual elements for the transportation of your work pieces or tools, measuring equipment or fixtures, auxiliaries or any other goods. Practical accessory additions can be attached to the side elements to enhance the versatility of the trolley. There are variable height options through adjustable platform levels to provide a comfortable working posture. *VariTUL* - will enhance any production area.



Document pocket



Deposit panel



Utensils box

***VariTUL* - Variable solutions for flexible transport and storage**



Our well-proven TUL carriers can also be inserted for safe transportation of tools.



High level trolleys with adjustable insert frame positions and interlock push handles for ergonomic working.

VariTUL - Modular and Easy to Interlock



Colour: RAL 7011 iron grey

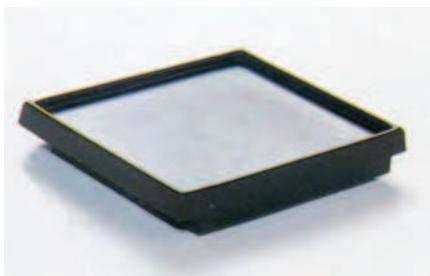


	Model VTH5	Model VTH7
Side element with swivel castor and locking castor	w x h = 520 x 880 mm Ref.no. 130.501	
Side element with fixed castors	w x h = 520 x 880 mm Ref.no. 130.502	
Push handle Colour: RAL 3020 traffic red	l x w x h = 500 x 90 x 100 mm Ref.no. 130.520	
Insert frame	l x w x h = 670 x 500 x 65 mm (for 10 TUL carriers) Ref.no. 130.510	l x w x h = 910 x 500 x 65 mm (for 14 TUL carriers) Ref.no. 130.511
Complete set	Set 1: 1 side element with swivel castor and locking castor 1 side element with fixed castors 2 insert frames 1 push handle l x w x h = 780 x 520 x 900 mm Loading capacity 250 kp Weight 23 kg Ref.no. 129.510	Set 2: 1 side element with swivel castor and locking castor 1 side element with fixed castors 2 insert frames 1 push handle l x w x h = 1010 x 520 x 900 mm Loading capacity 250 kp Weight 34 kg Ref.no. 129.511
Side element with swivel castor and locking castor for high level trolleys	w x h = 520 x 1800 mm Ref.no. 130.505	
Side element with fixed castors for high level trolleys	w x h = 520 x 1800 mm Ref.no. 130.506	



	Model VTH5	Model VTH7
Insertable shelf	l x w x h = 620 x 240 x 15 mm Ref.no. 130.530	l x w x h = 860 x 240 x 15 mm Ref.no. 130.531
Insertable shelf with punched-out hole grid	l x w x h = 620 x 240 x 15 mm for ISO 40, HSK 63, PSK 63 (C6) Capacity: 20 tools Ref.no. 130.535	l x w x h = 860 x 240 x 15 mm for ISO 40, HSK 63, PSK 63 (C6) Capacity: 29 tools Ref.no. 130.536
Insertable tray made of V2A steel	l x w x h = 620 x 240 x 50 mm Ref.no. 130.540	l x w x h = 860 x 240 x 50 mm Ref.no. 130.541
Steel tray incl. support brackets	l x w x h = 630 x 490 x 20 mm Ref.no. 130.545	l x w x h = 870 x 490 x 20 mm Ref.no. 130.546
Document pocket for format 325 x 220 mm	l x w x h = 495 x 60 x 276 mm Ref.no. 130.521	
Deposit panel with corrugated rubber	l x w x h = 495 x 215 x 74 mm Ref.no. 130.522	
Utensils box	l x w x h = 495 x 95 x 80 mm Ref.no. 130.523	
Universal adapter	l x w x h = 495 x 20 x 65 mm Ref.no. 130.524	

Tool deposit boards



Standard specification:

Phenol chip board with foam layer.

240 x 225 mm, equivalent to the
length of 2 tool carriers
Weight 1.3 kg

Ref.no. 127.041

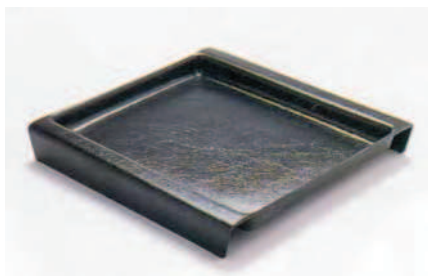
480 x 225 mm, equivalent to the
length of 4 tool carriers
Weight 2.5 kg

Ref.no. 127.042

975 x 225 mm, equivalent to the
length of 8 tool carriers
Weight 4.5 kg

Ref.no. 130.018

Tool deposit trays, flat



Standard specification:

Made of moulded plastic.

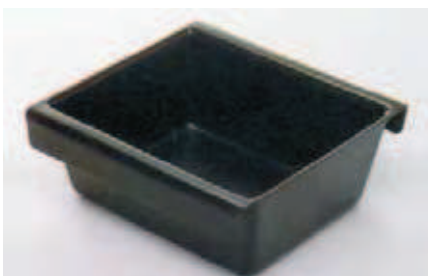
240 x 194 x 20 mm, equivalent to the
length of 2 tool carriers
Weight 0.2 kg

Ref.no. 127.051

480 x 194 x 20 mm, equivalent to the
length of 4 tool carriers
Weight 0.4 kg

Ref.no. 127.052

Tool deposit trays, deep



Standard specification:

Made of moulded plastic.

240 x 194 x 90 mm, equivalent to the
length of 2 tool carriers
Weight 0.3 kg

Ref.no. 127.039

480 x 194 x 90 mm, equivalent to the
length of 4 tool carriers
Weight 0.6 kg

Ref.no. 127.040

Profile rails



Standard specification:

Extruded hollow profile made of aluminium
in fixed lengths for suspension of
tool carriers, with fastening borings,
ø 9 mm.

480 mm long
for 2 tool carriers
Weight 1.0 kg

Ref.no. 127.021

960 mm long
for 4 tool carriers
Weight 2.0 kg

Ref.no. 127.022

1920 mm long
for 8 tool carriers
Weight 4.2 kg

Ref.no. 127.023

Tall Cabinets with Roller Shutters

Tall cabinet for tool carriers

The two robust steel cabinet options are designed for easy access and secure storage of tools and equipment. Both are equipped with roller shutters for safety and space saving in the machine shop or tool setting area.

The cabinets are available in the three standard colours:

- RAL 7035 light grey
- RAL 6011 reseda green
- RAL 5019 capri blue

Other colours available on request.



Use

For storing tools. To accommodate up to 32 tool carriers.

Standard specification

Fitted with 8 profile rails.
A transportation base with a height of 100 mm is already integrated.
Tool carriers are to be ordered separately.

I x w x h = 1000 x 600 x 2050 mm

Colour	Ref.no.
RAL 7035	128.013
RAL 6011	128.014
RAL 5019	(128.015)

Tall cabinet with removable shelves



Use

For general storage of machine shop equipment and other small parts.

Standard specification

With 4 removable shelves
load capacity 100 kg/shelf).
A transportation base with a height of 100 mm is already integrated.

I x w x h = 1000 x 600 x 2050 mm

Colour	Ref.no.
RAL 7035	(128.113)
RAL 6011	(128.114)
RAL 5019	(128.115)

Ref.no. in brackets () = Delivery time on request

Tool Racks

Tool racks, single-sided



Use

For keeping tools in the store room, in the toolshop and at the tool setting area.
To be fastened at the wall or on the floor.

Standard specification

Made of welded steel square tubing.
Colour RAL 7035 light grey.

1 m long, to accommodate 32 tool carriers (4 per rail).

Standard specification

With 8 aluminium profile rails.
Tool racks are delivered in component parts and can easily be self-assembled.

l x w x h = 980 x 335 x 1750 mm
Weight 33.0 kg

2 m long, to accommodate 64 tool carriers (8 per rail).

Standard specification

With 8 aluminium profile rails.
Tool racks are delivered in component parts and can easily be self-assembled.

l x w x h = 1940 x 335 x 1750 mm
Weight 50.0 kg

Ref.no. 128.001

Ref.no. 128.002