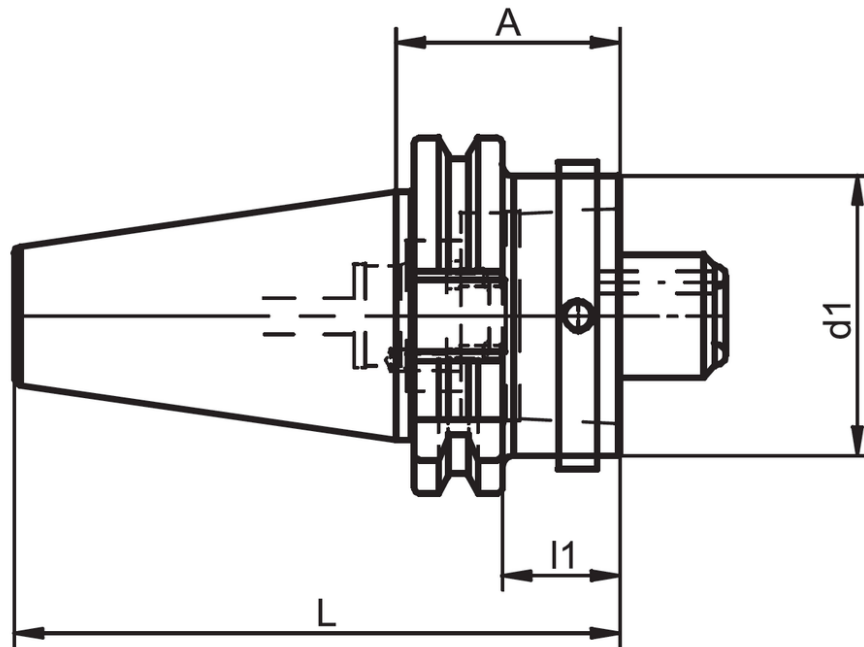


For CAT / ASME (ANSI) B5.50 spindles adapting to HSK taper

Rev. 19-0923 Page 1 of 1
Uncontrolled Document



Gauge length subject to change. Other sizes and taper-adaptions are available. Contact us for more information.

Need something different? Contact us with your application and we can determine a suitable adapter:

- Other steep taper versions: SK-DIN 69871, MAS 403-BT, ISO, DIN 2080, and other V-Flange spindles
- Different gauge lengths, taper sizes, radial or axial adjustment capability
- Special application HSK clamping mechanisms: radial (side lock) or axial (from either taper or spindle adapter end), and rear-clamp (for HSK-E/F)

K / Spindle-Taper	D1-HSK	Part Number
Steep Taper (CAT/ANSI) 40	HSK-A/C 63	698.340.063.000
Steep Taper (CAT/ANSI) 50	HSK-A/C 50	698.350.050.000
Steep Taper (CAT/ANSI) 50	HSK-A/C 63	698.350.063.000
Steep Taper (CAT/ANSI) 50	HSK-A/C 100	698.350.090.000
Steep Taper (CAT/ANSI) 50	HSK-A/C 125	698.350.092.000