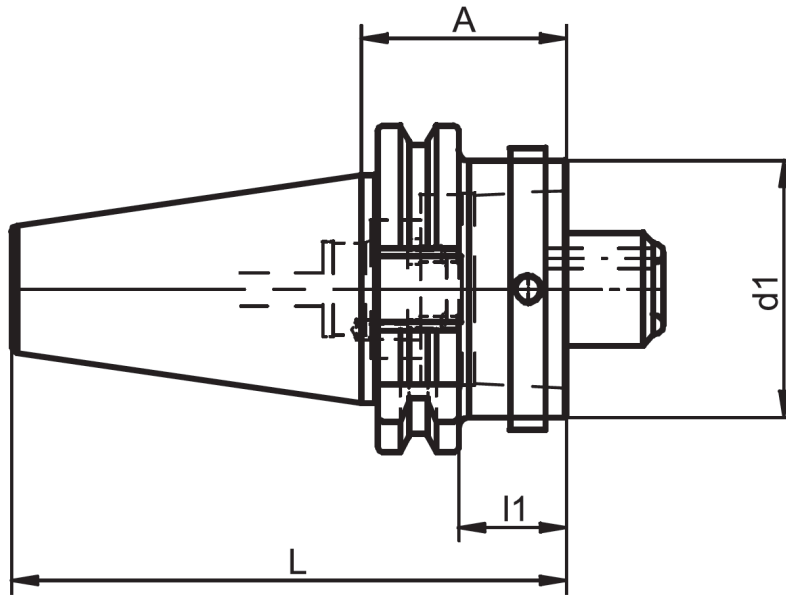


For Steep Taper (SK-DIN 69871) spindles adapting to HSK taper

Rev. 14-1211 Page 1 of 2  
Uncontrolled Document



- Maximum runout between steep and HSK taper is 0.003 mm
- Adapts from Steep taper DIN 69871 to HSK

\*Gauge length subject to change. Contact us for more information.

Need something different? Contact us with your application and we can determine a suitable adapter:

- Other steep taper versions: CAT/ANSI, MAS 403-BT, ISO, DIN 2080, and other V-Flange spindles
- Different gauge lengths, taper sizes, radial or axial adjustment capability
- Special application HSK clamping mechanisms: radial (side lock) or axial (from either taper or spindle adapter end), and rear-clamp (for HSK-E/F)

K / Item	A	D1	D1-HSK	Part Number
Steep Taper (DIN) 40	40*	25	HSK-A/C 25	<a href="#">688.340.025.000</a>
Steep Taper (DIN) 40	40*	32	HSK-A/C 32	<a href="#">688.340.032.000</a>
Steep Taper (DIN) 40	40*	40	HSK-A/C 40	<a href="#">688.340.040.000</a>
Steep Taper (DIN) 40	40*	50	HSK-A/C 50	<a href="#">688.340.050.000</a>
Steep Taper (DIN) 40	70*	63	HSK-A/C 63	<a href="#">688.340.063.000</a>
Steep Taper (DIN) 40	Contact us	32	HSK-B/D/F 32 + A/C/E 25	<a href="#">688.340.632.000</a>
Steep Taper (DIN) 40	Contact us	40	HSK-B/D/F 40 + A/C/E 32	<a href="#">688.340.640.000</a>
Steep Taper (DIN) 40	Contact us	50	HSK-B/D/F 50 + A/C/E 40	<a href="#">688.340.650.000</a>
Steep Taper (DIN) 40	Contact us	63	HSK-B/D/F 63 + A/C/E 50	<a href="#">688.340.663.000</a>
Steep Taper (DIN) 40	Contact us	80	HSK-B/D/F 80 + A/C/E 63	<a href="#">688.340.680.000</a>
Steep Taper (DIN) 50	40*	25	HSK-A/C 25	<a href="#">688.350.025.000</a>
Steep Taper (DIN) 50	40*	32	HSK-A/C 32	<a href="#">688.350.032.000</a>

For Steep Taper (SK-DIN 69871) spindles adapting to HSK taper

Rev. 14-1211 Page 2 of 2  
Uncontrolled Document

K / Item	A	D1	D1-HSK	Part Number
Steep Taper (DIN) 50	40*	40	HSK-A/C 40	<a href="#">688.350.040.000</a>
Steep Taper (DIN) 50	40*	50	HSK-A/C 50	<a href="#">688.350.050.000</a>
Steep Taper (DIN) 50	40*	63	HSK-A/C 63	<a href="#">688.350.063.000</a>
Steep Taper (DIN) 50	60*	80	HSK-A/C 80	<a href="#">688.350.080.000</a>
Steep Taper (DIN) 50	100*	100	HSK-A/C 100	<a href="#">688.350.090.000</a>
Steep Taper (DIN) 50	Contact us	Contact us	HSK-A/C 125	<a href="#">688.350.092.000</a>
Steep Taper (DIN) 50	40*	25	HSK-E 25 + F 32	<a href="#">688.350.525.000</a>
Steep Taper (DIN) 50	75*	32	HSK-E 32 + F 40	<a href="#">688.350.532.000</a>
Steep Taper (DIN) 50	75*	40	HSK-E 40 + F 50	<a href="#">688.350.540.000</a>
Steep Taper (DIN) 50	75*	63	HSK-E 63 + F 80	<a href="#">688.350.563.000</a>
Steep Taper (DIN) 50	100*	80	HSK-E 100 + F 80	<a href="#">688.350.580.000</a>
Steep Taper (DIN) 50	150*	100	HSK-E 100	<a href="#">688.350.590.000</a>
Steep Taper (DIN) 50	Contact us	32	HSK-B/D/F 32 + A/C/E 25	<a href="#">688.350.632.000</a>
Steep Taper (DIN) 50	Contact us	40	HSK-B/D/F 40 + A/C/E 32	<a href="#">688.350.640.000</a>
Steep Taper (DIN) 50	Contact us	50	HSK-B/D/F 50 + A/C/E 40	<a href="#">688.350.650.000</a>
Steep Taper (DIN) 50	Contact us	63	HSK-B/D/F 63 + A/C/E 50	<a href="#">688.350.663.000</a>
Steep Taper (DIN) 50	Contact us	80	HSK-B/D/F 80 + A/C/E 63	<a href="#">688.350.680.000</a>
Steep Taper (DIN) 50	Contact us	100	HSK-B/D/F 100 + A/C/E 80	<a href="#">688.350.690.000</a>
Steep Taper (DIN) 50	90	85	Weinig 85	<a href="#">688.350.W85.000</a>
Steep Taper (DIN) 60	Contact us	100	HSK-A/C 100	<a href="#">688.360.090.000</a>

\*Gauge length subject to change. Contact us for more information.  
Other sizes and custom types are available – please contact us for more information.