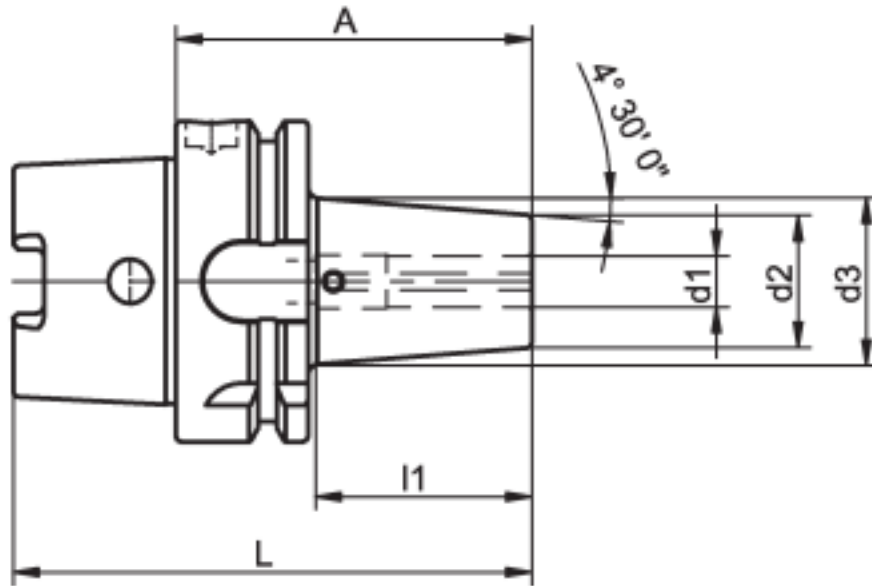


similar to DIN 69 882-8, type G

Rev. 12-1101 Page 1 of 1  
Uncontrolled Document



**Design**

Permissible concentricity deviation of hollow taper shank to location hole  $d_1 = 0.003$  mm (measured at  $3 \times D$  cantilever length). Chucks are fine balanced according to ISO 1940-1 G 2.5 at 25,000 rpm. The clamping diameter is designed for a shank tolerance of h6. Fitted with Cool-Stream bores.

**Note**

Other designs and sizes are available on request.

Available for HSK-A 63