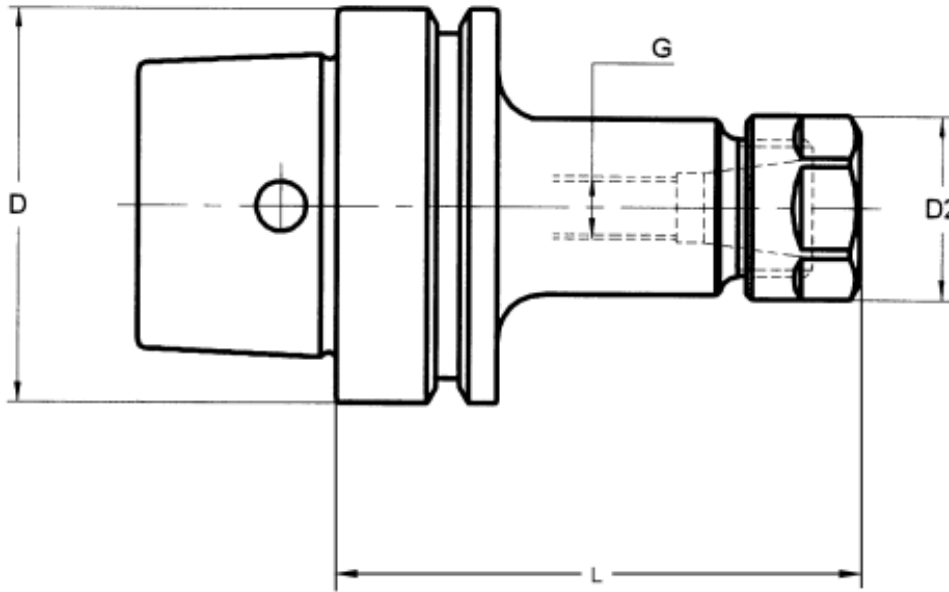


For tools with cylindrical shank DIN 1835-A

Rev. 12-1101 Page 1 of 1
Uncontrolled Document



- Maximum circular deviation between outer taper and collet housing ≤ 0.003 mm.
- Balanced according to ISO 1940-1 up to 10,000 rpm.
- We have latest methods for dynamic balancing up to 50,000 rpm.
- Coolant tube to be ordered separately.

Taper (D)	Length (L)	Collet Size	D2	G	Part Number
HSK-E 25	60	ER 16	22	M-6	681.0041806003
HSK-E 32	80	ER 16	28	M-10	681.00418060103
HSK-E 40	80	ER 16	28	M-10	681.00418060203
HSK-E 40	80	ER 25	42	M-10	681.00418060205
HSK-E 40	100	ER 32	50	M-16	681.00418060206
HSK-E 50	80	ER 16	28	M-10	681.00418060303
HSK-E 50	80	ER 25	42	M-10	681.00418060305
HSK-E 50	100	ER 32	50	M-16	681.00418060306
HSK-E 63	80	ER 16	28	M-10	681.00418060403
HSK-E 63	80	ER 25	42	M-10	681.00418060405
HSK-E 63	100	ER 32	50	M-16	681.00418060406

Available for HSK-E 25, 32, 40, 50, 63

TAC Rockford Product Line

Machine Tool Gauges, Tool Changer Alignment, Runout Test Arbors, Workholding Systems, Tool Holders, Adapters and Extensions, Tool Holder Blanks, Machine Tool Accessories, Coolant Tubes and Gauges, Heat Shrink Systems, Rapid Prototyping

Tool Holders

Gauges

Accessories

Rapid Prototyping