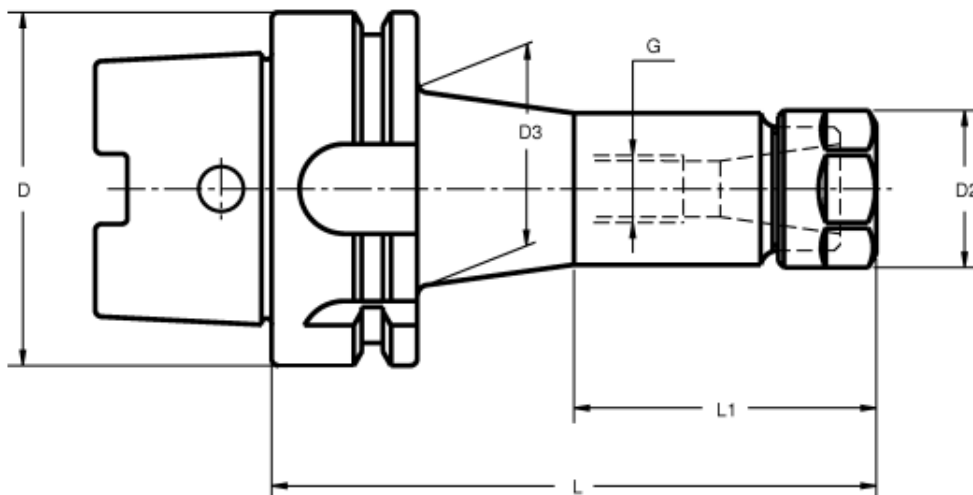


For tools with cylindrical straight shank DIN 1835-A

Rev. 12-1101 Page 1 of 2
Uncontrolled Document



- Maximum circular deviation between outer taper and collet housing ≤ 0.003 mm.
- Balanced according to ISO 1940-1 up to 10,000 rpm. We have latest methods for dynamic balancing up to 50,000 rpm.
- Coolant tube to be ordered separately.

Taper (D)	Length (L)	Collet Size	L1	D2	D3	G	Part Number
HSK-A 32	80	ER 16	-	28	-	M-8	681.00414060103
HSK-A 40	80	ER 16	-	28	-	M-10	681.00414060203
HSK-A 40	80	ER 25	-	42	-	M-10	681.00414060205
HSK-A 40	100	ER 32	-	50	-	M-16	681.00414060206
HSK-A 50	80	ER 25	-	42	-	M-10	681.00414060305
HSK-A 50	100	ER 32	-	50	-	M-16	681.00414060306
HSK-A 50	100	ER 16	-	28	-	M-10	681.00414060313
HSK-A 63	80	ER 16	-	28	-	M-10	681.00414060403
HSK-A 63	80	ER 25	-	42	-	M-10	681.00414060405
HSK-A 63	100	ER 32	-	50	-	M-16	681.00414060406
HSK-A 63	120	ER 40	-	63	-	M-16	681.00414060407
HSK-A 63	100	ER 16	-	28	-	M-10	681.00414060413
HSK-A 63	120	ER 25	-	42	-	M-10	681.00414060415
HSK-A 63	160	ER 40	-	50	-	M-16	681.00414060426
HSK-A 63	160	ER 40	-	63	-	-	681.00414060427
HSK-A 63	160	ER 16	85	28	45	M-10	681.00414060433
HSK-A 63	200	ER 25	-	42	-	M-10	681.00414060445
HSK-A 63	200	ER 32	-	50	-	M-16	681.00414060446
HSK-A 63	200	ER 40	-	63	-	-	681.00414060447

For tools with cylindrical straight shank DIN 1835-A

Rev. 12-1101 Page 2 of 2
Uncontrolled Document



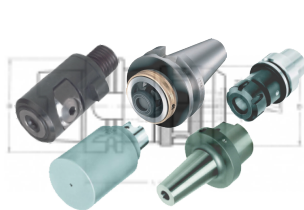
Taper (D)	Length (L)	Collet Size	L1	D2	D3	G	Part Number
HSK-A 80	120	ER 40	-	63	-	M-16	681.00414060507
HSK-A 80	100	ER 16	-	28	-	M-10	681.00414060513
HSK-A 100	100	ER 32	-	50	-	M-16	681.00414060606
HSK-A 100	120	ER 40	-	63	-	M-16	681.00414060607
HSK-A 100	100	ER 16	-	28	-	M-10	681.00414060613
HSK-A 100	160	ER 32	-	50	-	M-16	681.00414060626
HSK-A 100	160	ER 40	-	63	-	M-16	681.00414060627
HSK-A 100	160	ER 16	85	28	60	M-10	681.00414060633
HSK-A 100	160	ER 16	120	28	60	M-10	681.00414060643
HSK-A 100	200	ER 32	-	50	-	M-16	681.00414060646
HSK-A 100	200	ER 40	-	63	-	M-16	681.00414060647

Available for HSK-A 32, 40, 50, 63, 80, 100

TAC Rockford Product Line

Machine Tool Gauges, Tool Changer Alignment, Runout Test Arbors, Workholding Systems, Tool Holders, Adapters and Extensions, Tool Holder Blanks, Machine Tool Accessories, Coolant Tubes and Gauges, Heat Shrink Systems, Rapid Prototyping

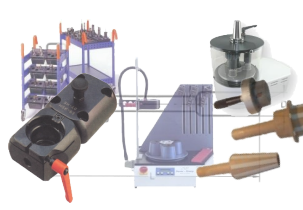
Tool Holders



Gauges



Accessories



Rapid Prototyping

