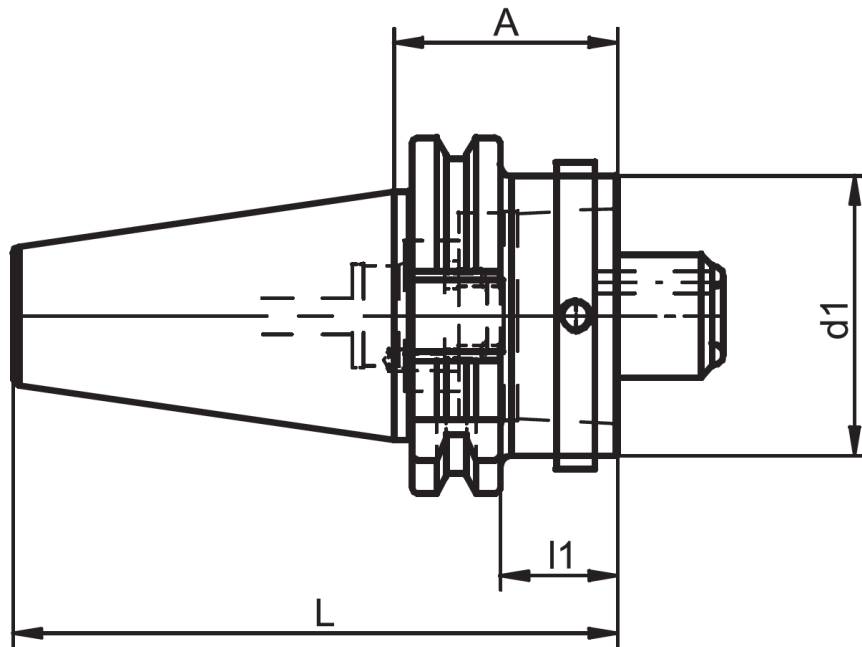


For Steep Taper BT (MAS 403) JIS B 6339 spindles adapting to HSK taper

Rev. 19-0923 Page 1 of 1
Uncontrolled Document



Adapts from JIS B 6339 (MAS 403) BT to DIN 69063 (HSK taper).

K / Spindle-Taper	D1-HSK	Part Number
Steep Taper (MAS 403 BT) 40	HSK-A/C 63	678.340.063.000
Steep Taper (MAS 403 BT) 50	HSK-A/C 63	678.350.063.000