



TUL - Transport and Storage System for Tools

Tool Carriers: The Basic Element of the TUL System



The tool carrier measures 240 x 120 x 130 mm and has 2, 3 or 5 locations for holding tools with a tapered or cylindrical shank. The plastic used is shock-proof and resistant to all substances which are usually present such as oils, fats, petrol.

Tool carriers with colour marking

Coloured pins for clear indication of the tool's status. Colour coding shows at a glance the new tools for the machine and used tools for resetting.

Colour pins	Colour	Ref.no.
1 packet incl. 50 pieces	Red	127.047
	Green	127.048



TUL carrier with holding disk for cutting tools

For the transport and storage of cutting tools. The disk is rotatable and indicates whether the cutting tool can be used or whether it is worn out.

Ref.no. on request.

Versatile:



The tool carrier is used **individually** to store and transport few tools. A hole with countersinking enables it to be fastened to a base.



By assembling several tool carriers **linked** together, a higher storage capacity can be achieved. A groove and tongue prevent lateral displacement. Only the first and the last tool carrier has to be fixed to the table or tool cabinet.



The tool carriers can be **inserted** on all trolleys and racks with bars at the side for carrying tools vertically.



The tool carriers can be **suspended** onto aluminium profile rails for attachment on walls, racks, tall cabinets and transport trolleys. Aluminium profile rails and tool carriers are ideal for building customized storage and transport units.

Tool Carriers

Use for	Size	Number of locations	Ref. no.	Weight kg
HSK tapers HSK A - ISO 12164-1 **	HSK 32	5	127.025	0.9
	HSK 40	5	127.026	0.9
	HSK 50	3	127.027	0.7
	HSK 63	3	127.028	0.7
	HSK 80	2	127.029	0.8
	HSK 100	2	127.030	0.8
	HSK 125	1	on request	1.4
	HSK 160	1	on request	1.4
ISO tapers DIN 2080 / ISO 297 DIN 69 871 JIS B 6339 (MAS 403 BT) ANSI B 5.50	ISO 30	3	127.091	0.8
	ISO 35	3	127.018	1.1
	ISO 40	3	127.011	0.8
	ISO 45	2	127.015	0.8
	ISO 50	2	127.001	0.8
	ISO 60 240x240x130 mm	1	127.073*	1.4
Morse tapers DIN 228	Morse 3	5	127.009	1.0
	Morse 4	5	127.007	0.9
	Morse 5	3	127.014	0.9
Cylindrical shanks (Adjustable adapters) DIN 6327	Tr 16 (ø 17.3)	5	127.010	1.0
	Tr 20 (ø 21.4)	5	127.009	1.0
	Tr 25 (ø 27.2)	5	127.008	0.9
	Tr 28 (ø 30.3)	5	127.007	0.9
	Tr. 36 (ø 38.6)	3	127.012	1.1
	Tr 40 (ø 41.3)	3	127.014	0.9
	Tr 48 (ø 52.0)	3	127.002	0.8
Cylindrical shanks (Lathes)	16, ø 30	5	127.007	0.9
	20, ø 40	3	127.014	0.9
	25, ø 50	3	127.002	0.9
	32, ø 60	2	127.099	0.8
ABS-Komet ABS-N	ABS 40 (ø 20)	3	127.069	0.7
	ABS 50 (ø 28)	3	127.070	0.7
	ABS 63 (ø 34)	3	127.071	0.7
Capto™ - System	C 3	5	127.009	1.0
	C 4	5	127.008	0.9
	C 5	3	127.057	0.9
	C 6	3	127.058	1.0
	C 8	2	127.059	1.0
KM / UTS - System	KM 32	5	127.060	0.9
	KM 40	5	127.061	0.9
	KM 50	3	127.062	0.9
	KM 63	3	127.063	0.8
	KM 80	2	127.064	1.0
Modular precision spindle inserts	240x240x130 mm	2	127.100*	
Universal carrier to be used as tray or with the board supplied for small tools (drilling stencil included)	240x240x130 mm	0	127.016*	2.2

**Spares for HSK

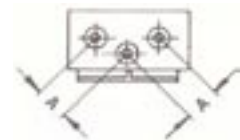
Size	Retainer Ref.no.
HSK 32	127.122
HSK 40	127.123
HSK 50	127.124
HSK 63	127.125
HSK 80	127.126
HSK 100	127.127

* Important information:

When held up on aluminium profile rails the application possibilities are limited due to the double size. Please request additional information if required.



Number of locations	A
2	120
3	70
5	51



TULMOBIL System 1 (RAL 2004)**Model OS1**

(former model FM)



Tyres: Without tread, grey solid rubber

Capacity

To accommodate 8 tool carriers at an angle on aluminium profile rails. In the top and bottom steel frame a further 8 carriers or small storage boards or trays can be inserted.

Standard specification

With 2 swivel castors (one with locking device), 2 fixed castors, push handle and 4 aluminium profile rails.

l x w x h = 770 x 500 x 960 mm

Loading capacity 300 kp

Weight 37.0 kg

Ref.no. 129.011

**Model OS2**

(former model TF)



Tyres: Without tread, grey solid rubber

Capacity

To accommodate 16 tool carriers at an angle on aluminium profile rails. Two further carriers can be inserted in the front steel frame and another seven in the back. The top profile frame available as an accessory provides additional deposit space.

Standard specification

With 2 swivel castors (one with locking device), 2 fixed castors, push handle and 4 aluminium profile rails.

l x w x h = 975 x 700 x 1015 mm

Loading capacity 600 kp

Weight 60.0 kg

Ref.no. 129.020

**Model OS3**

(former model BZ)



Tyres: Without tread, grey solid rubber

Capacity

To accommodate 32 tool carriers at an angle on aluminium profile rails. The profile frame available as an accessory provides additional deposit space.

Standard specification

With 2 swivel castors (one with locking device), 2 fixed castors, push handle and 8 aluminium profile rails.

l x w x h = 975 x 900 x 1015 mm

Loading capacity 600 kp

Weight 70.0 kg

Ref.no. 129.021



TULMOBIL System 1 (RAL 2004)**Model OH3**

(former model BW)



Tyres: Without tread, grey solid rubber

Capacity

To accommodate up to 32 tool carriers horizontally, 16 in the top and 16 in the bottom. A wide range of accessories enable the trolley to meet all operating requirements.

Standard specification

With 2 swivel castors (one with locking device), 2 fixed castors, push handle and deposit board at the bottom.

L x w x h = 1070 x 500 x 825 mm

Loading capacity 600 kp

Weight 36.0 kg

Ref.no. 129.002

**Accessories and spare parts****Drawing bag made of sheet metal for TULMOBIL OS1 and OH3**

to be attached on the front side, for DIN A4 horizontal format.
Weight 2.1 kg

Ref.no. 130.014

**Deposit board for TULMOBIL OH3**

suitable for the complete lower area
L x W = 1000 x 500 mm
Weight 6.2 kg

Ref.no. 130.016

**Profile frame for TULMOBIL OS2 and OS3**

to be screwed on, suitable for 8 tool carriers or a deposit board or a combination of tool carriers, deposit trays and deposit boards.
Weight 3.9 kg

Ref.no. 130.020

**Protective frame for TULMOBIL OS3**

can be folded up (can be retrofitted)
Weight 11.0 kg

Ref.no. 130.023



TULMOBIL System 2 (RAL 5000) Series S

Model S1



Tyres: Without tread, grey solid rubber

Capacity

To accommodate 8 tool carriers at an angle on aluminium profile rails.

Standard specification

With 2 swivel castors (one with locking device), 2 fixed castors, 2 safety hand grips (bended), 2 safety hand grips (upright), 4 aluminium profile rails, 1 deposit board with ridged rubber surface

l x w x h = 620 x 590 x 940 mm

Loading capacity 500 kp

Weight 43.50 kg

Ref.no. 129.013

Model S2



Tyres: Without tread, grey solid rubber

Capacity

To accommodate 16 tool carriers at an angle on aluminium profile rails.

Standard specification

With 2 swivel castors (one with locking device), 2 fixed castors, 2 safety hand grips (bended), 2 safety hand grips (upright), 8 aluminium profile rails, 1 deposit board with ridged rubber surface

l x w x h = 890 x 560 x 940 mm

Loading capacity 500 kp

Weight 53.0 kg

Ref.no. 129.014

TULMOBIL System 2 (RAL 5000) Series S

Model S3 with alternative versions



Tyres: Without tread, grey solid rubber

Capacity

To accommodate 16 tool carriers at an angle on aluminium profile rails.

Standard specification

With 2 swivel castors (one with locking device), 2 fixed castors, 2 safety hand grips (bended), 2 safety hand grips (upright), 4 aluminium profile rails, 1 deposit board with ridged rubber surface

l x w x h = 1020 x 620 x 940 mm

Loading capacity 500 kp

Weight 54.0 kg

Ref.no. 129.015

Supplementary possibilities for customer modification

Alternative version 1



Up to 2 additional aluminium profile rails can be ordered separately for fitting lengthwise to accommodate up to 8 additional tool carriers at an angle.

1 aluminium profile rail including fastening screws:

962 mm, to carry 4 tool carriers

Weight 2.0 kg



Ref.no. 127.209

Alternative version 2



2 rectangular steel sections can be ordered separately for fitting lengthwise to accommodate an additional 8 tool carriers horizontally (particularly suitable for holding longer tools).

1 steel section set (2 steel sections and fastening screws)

960 mm, to carry 8 tool carriers

Weight 7.5 kg



Ref.no. 127.212

TULMOBIL System 2 (RAL 5000) Series H

Model H1



Tyres: Without tread, grey solid rubber

Capacity

To accommodate 8 tool carriers horizontally.

Standard specification

With 2 swivel castors (one with locking device), 2 fixed castors, 2 safety hand grips (bended), 2 safety hand grips (upright), 1 deposit board

l x w x h = 540 x 620 x 940 mm
Loading capacity 500 kp
Weight 40.5 kg

Ref.no. 129.016

Model H2



Tyres: Without tread, grey solid rubber

Capacity

To accommodate 12 tool carriers horizontally.

Standard specification

With 2 swivel castors (one with locking device), 2 fixed castors, 2 safety hand grips (bended), 2 safety hand grips (upright), 1 deposit board

l x w x h = 790 x 620 x 940 mm
Loading Capacity 500 kp
Weight 47 kg

Ref.no. 129.017

Alternatives for Model H1 and H2

In place of the deposit board, 2 rectangular steel sections can be fitted to insert further tool carriers, small deposit boards or deposit trays. Steel section set has to be ordered separately.



Steel section set: 2 steel sections + fastening screws



For TULMOBIL H1

480 mm, to insert 8 tool carriers
Weight 3.8 kg

Ref.no. 127.210

For TULMOBIL H2

720 mm, to insert 12 tool carriers
Weight 5.6 kg

Ref.no. 127.211

TULMOBIL System 2 (RAL 5000) Series H

Model H3-1



Tyres: Without tread, grey solid rubber

Capacity

To accommodate 16 tool carriers horizontally.

Standard specification

With 2 swivel castors (one with locking device), 2 fixed castors, 2 safety hand grips (bended), 2 safety hand grips (upright), 1 deposit board

I x w x h = 1020 x 620 x 940 mm
Loading capacity 500 kp
Weight 53.5 kg

Ref.no. 129.018

Model H3-2



Tyres: Without tread, grey solid rubber

Capacity

To accommodate 32 tool carriers horizontally.

Standard specification

With 2 swivel castors (one with locking device), 2 fixed castors, 2 safety hand grips (bended), 2 safety hand grips (upright), 2 deposit boards

I x w x h = 1020 x 620 x 940 mm
Loading Capacity 500 kp
Weight 50 kg

Ref.no. 129.019

Accessories

Drawing pocket of sheet steel for series H and S

for fixing onto the end of the trolley.
I x w x h = 460 x 100 x 210 mm
Weight 2.1 kg



Ref.no. 130.032

Bracketed deposit tray of sheet steel for series H

for fixing onto the end of the trolley.
I x w x h = 535 x 205 x 95 mm
Weight 2.3 kg



Ref.no. 127.038

TULMOBIL Accessories**Safety hand grips for
TULMOBIL System 2****Design**

Colour: Red RAL 3013

Safety hand grip (bended)

Ref.no. 130.027

Safety hand grip (upright)

Ref.no. 130.028

**Swivel castors with
locking device****Design**

Tyres: Without tread, grey solid rubber.
Rims: Made of pressed sheet steel,
with roller bearing, zinc-plated.

For TULMOBIL OS1 / OH3
and TULMOBIL System 2 (ø 140 mm)

Ref.no. 130.001

Design: As described above, without stem.
For TULMOBIL OS2 / OS3 (ø 160 mm)

Ref.no. 130.003

**Fixed castors with
stem fitting****Design**

Tyres: Without tread, grey solid rubber.
Rims: Made of pressed sheet steel,
with steel tube hub, with roller or ball
bearing, zinc-plated.

For TULMOBIL OH3
and TULMOBIL System 2 (ø 140 mm)

Ref.no. 130.006

Simple swivel castors**Design**

Tyres: Without tread, grey solid rubber.
Rims: Made of pressed sheet steel,
with roller bearing, zinc-plated.

For TULMOBIL OS1 / OH3
and TULMOBIL System 2 (ø 140 mm)

Ref.no. 130.002

Design: As described above, without stem.
For TULMOBIL OS2 / OS3 (ø 160 mm)

Ref.no. 130.004

**Fixed castors with
plate fitting****Design**

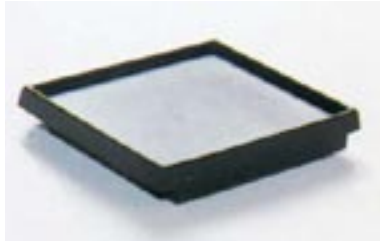
Tyres: Without tread, grey solid rubber.
Rims: Made of pressed sheet steel,
with steel tube hub, with roller or ball
bearing, zinc-plated.

For TULMOBIL OS1 (ø 140 mm)

Ref.no. 130.007

For TULMOBIL OS2 / OS3 (ø 160 mm)

Ref.no. 130.005

TULMOBIL Accessories**Tool deposit boards****Design**

Phenol chip board with foam layer.

240 x 225 mm, equivalent to the length of 2 tool carriers.
Weight 1.3 kg

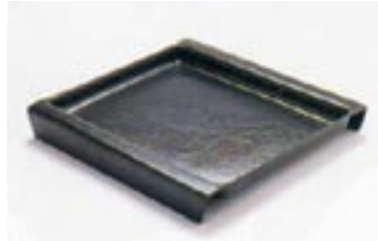
Ref.no. 127.041

480 x 225 mm, equivalent to the length of 4 tool carriers.
Weight 2.5 kg

Ref.no. 127.042

975 x 225 mm, equivalent to the length of 8 tool carriers.
Weight 4.5 kg

Ref.no. 130.018

Tool deposit trays, flat**Design**

Made of moulded plastic.

240 x 194 x 20 mm, equivalent to the length of 2 tool carriers.
Weight 0.2 kg

Ref.no. 127.051

480 x 194 x 20 mm, equivalent to the length of 4 tool carriers.
Weight 0.4 kg

Ref.no. 127.052

Tool deposit trays, deep**Design**

Made of moulded plastic.

240 x 194 x 90 mm, equivalent to the length of 2 tool carriers.
Weight 0.3 kg

Ref.no. 127.039

480 x 194 x 90 mm, equivalent to the length of 4 tool carriers
Weight 0.6 kg

Ref.no. 127.040

Profile rails**Design**

Extruded hollow profile made of aluminium in fixed lengths for suspension of tool carriers, with fastening borings, ø 9 mm.

480 mm long
for 2 tool carriers
Weight 1.0 kg

Ref.no. 127.021

960 mm long
for 4 tool carriers
Weight 2.0 kg

Ref.no. 127.022

1920 mm long
for 8 tool carriers
Weight 4.2 kg




Ref.no. 127.023

Tall Cabinets with Roller Shutters

Tall cabinet for tool carriers

The two robust steel cabinet options are designed for easy access and secure storage of tools and equipment. Both are equipped with roller shutters for safety and space saving in the machine shop or tool setting area.

The cabinets are available in the three standard colours

	RAL 7035 light grey
	RAL 6011 reseda green
	RAL 5019 capri blue

Other colours available on request.



Use

For storing tools. To accommodate up to 32 tool carriers.

Standard specification

Fitted with 8 profile rails.
A transportation base with a height of 100 mm is already integrated.
Tool carriers are to be ordered separately.

l x w x h = 1000 x 600 x 2050 mm

Colour	Ref.no.
RAL 7035	128.013
RAL 6011	128.014
RAL 5019	128.015

Tall cabinet with removable shelves



Use

For general storage of machine shop equipment and other small parts.

Standard specification

With 4 removable shelves
(load capacity 100 kg/shelf).
A transportation base with a height of 100 mm is already integrated.

l x w x h = 1000 x 600 x 2050 mm

Colour	Ref.no.
RAL 7035	128.113
RAL 6011	128.114
RAL 5019	128.115

Tool Racks

Tool racks, single sided

**Use**

For keeping tools in the store room, in the toolshop and at the tool setting area.
To be fastened at the wall or on the floor.

Design

Made of welded steel square tubing.
Colour RAL 7035 light grey.

1 m long, to accommodate 32 tool carriers (4 per rail).

Standard specification

With 8 aluminium profile rails.
Tool racks are delivered in component parts and can easily be self-assembled.

l x w x h = 980 x 335 x 1750 mm
Weight 33.0 kg

2 m long, to accommodate 64 tool carriers (8 per rail).

Standard specification

With 8 aluminium profile rails.
Tool racks are delivered in component parts and can easily be self-assembled.

l x w x h = 1940 x 335 x 1750 mm
Weight 50.0 kg

Ref.no. 128.001

Ref.no. 128.002

Tool Racks: System 1 and System 2

Model 4



Capacity

To accommodate 4 tool carriers horizontally.

Use

as a table model.

Colour RAL 7035 light grey
l x w x h = 511 x 224 x 160 mm
Weight 2.4 kg

Ref.no. 131.001

Model 8



Capacity

To accommodate 8 tool carriers in two rows (4 tool carriers per row), arranged at a 35° angle.

Use

as a table model or as a standing model together with underframe 131.011.

Colour RAL 7035 light grey
l x w x h = 500 x 500 x 105/415 mm
Weight 14.0 kg

Ref.no. 131.011

Model M4H



Capacity

To accommodate 4 tool carriers horizontally.

Use

as a table model.

Colour RAL 5000 blue
l x w x h = 350 x 545 x 200 mm
Weight 8.0 kg

Ref.no. 131.003

Model M8S



Underframe

For tool rack model 8, with wooden board as an intermediate deposit space.

Colour RAL 7035 light grey
l x w x h = 500 x 500 x 700 mm
Weight 17.0 kg

Ref.no. 131.012



To accommodate 8 tool carriers in two rows (4 tool carriers per row), arranged at a 35° angle.

Colour RAL 5000 blue
l x w x h = 580 x 500 x 480 mm
Weight 17.0 kg

Ref.no. 131.005