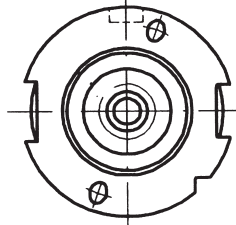
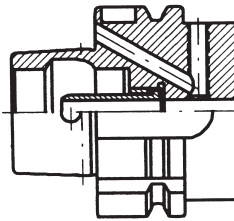


HSK Form A

Automatic Tool Change

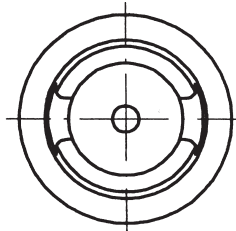
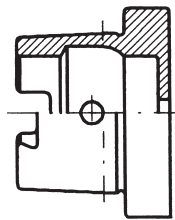
Comments: most common HSK form



HSK Form B

Automatic Tool Change

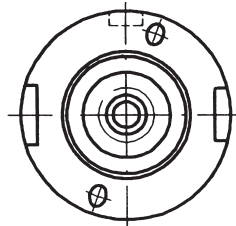
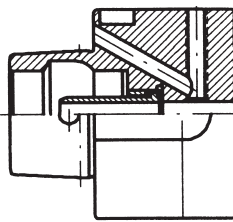
Comments: larger flange diameter for a stiffer tool-spindle interface



HSK Form C

Manual Tool Change, Front Clamping

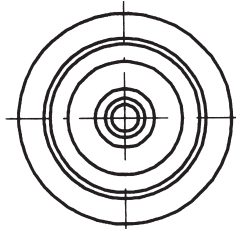
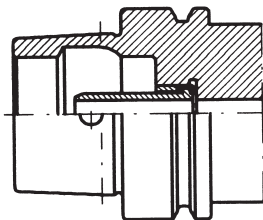
Comments: for use with tool extensions and short spindles, transfer lines



HSK Form D

Manual Tool Change

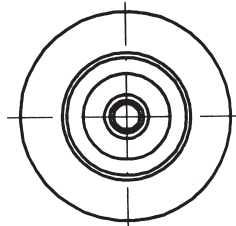
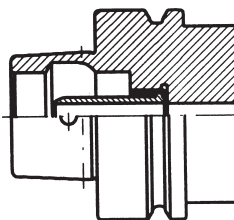
Comments: larger flange diameter for a stiffer tool-spindle interface



HSK Form E

Automatic Tool Change

Comments: no drive keyway, common in wood-working machines, easy to balance
Application: high speed machining



HSK Form F

Automatic Tool Change

Comments: larger flange diameter for a stiffer tool-spindle interface, no drive keyway
Application: high speed machining